

Omniplexer

VOICE/DATA DIGITAL MULTIPLEXER



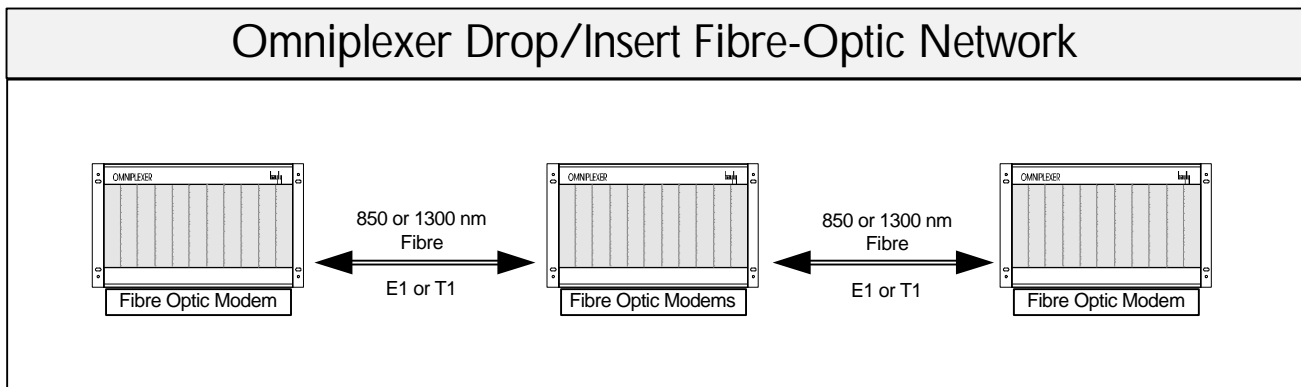
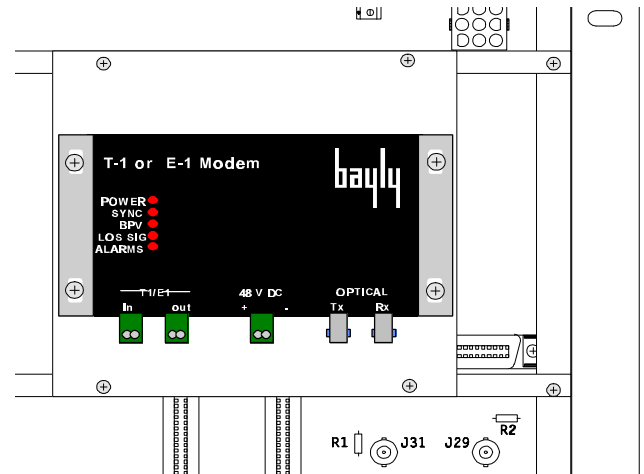
Fibre Optic Transmission

Bayly Communications' Fibre Optic Modem is designed to provide E1 or T1 transmission when used in conjunction with the Omniplexer voice/data multiplexer. Both point-to-point and drop/insert modes are supported.

Versions are available to support 850nm or 1300nm Multi-mode and 1300nm Single-mode fibre cable. Connection is made through an ST connector. The unit supports optical cable loss of up to 20 dB.

The T1 optical modem supports both AMI and B8ZS line codes and the E1 optical modem supports HDB3 line code. LED indicators are provided that keep you informed as to the status of power, synchronization, loss of signal, bipolar violations & alarm condition.

With the addition of this optical modem you get low cost, compact and efficient optical transmission using Omniplexer equipment.



Fibre Optic Modem Specifications

Data Rate	T-1 1.544 Mbps E-1 2.048 Mbps
Fibre Connector	ST
Loss Budget	20 dB Multi-mode @62.5um 20 dB Single-mode @ 9um
Error Rate	1 in 10E10 or better
Power	-48 VDC
Dimensions	Height 2.80 cm Width 12.75 cm Depth 7.50 cm

Versions	T-1	E-1
LED 850nm Multi-mode	050 606 001	050 606 004
LED 1300nm Multi-mode	050 606 002	050 606 005
LED 1300nm Single-mode	050 606 003	050 606 006
LED 1550nm Single-mode	050 606 007	050 606 008