

DCM64N High Speed Data Module

The DCM64N high speed data module offers synchronous data transmission from 56/64 Kbps to 1920 Kbps (E1 systems) and to 1536 Kbps (T1 systems), including all intermediate rates. You can expand the bandwidth to meet your needs for applications such as mainframe-to-mainframe computer communications, data file transfer and LAN interconnection.

Conforming to relevant CCITT Recommendations, the DCM64N high speed data module operates in increments of 64 Kbps, using bandwidth from 1 to 30 time slot channels for E1 systems and 1 to 24 time slot channels for T1 systems. Two independent channels are carried on a single module. Interfaces offered include V.35 and RS422. Both local and remote loopbacks are provided to aid in system set-up and diagnostics. These modules plug into any channel module slot in both E1 and T1 Omniplexer systems.

All configuration parameters are software selectable, including time slot selection, internal/external clock, local/remote loopback and channel enable/disable. A VT-100 terminal is used to configure the module.

Expand your bandwidth from 56/64 Kbps to 1920 Kbps as and when you need it



Loopbacks aid in set-up and diagnostics

ADVANTAGES

- Two independent channels per module reduce purchase costs and spares requirements
- V.35 and RS422 interfaces are available to support all your high speed applications
- Diagnostic loopbacks are provided for set-up and troubleshooting
- Self-check routine confirms operational status

APPLICATIONS

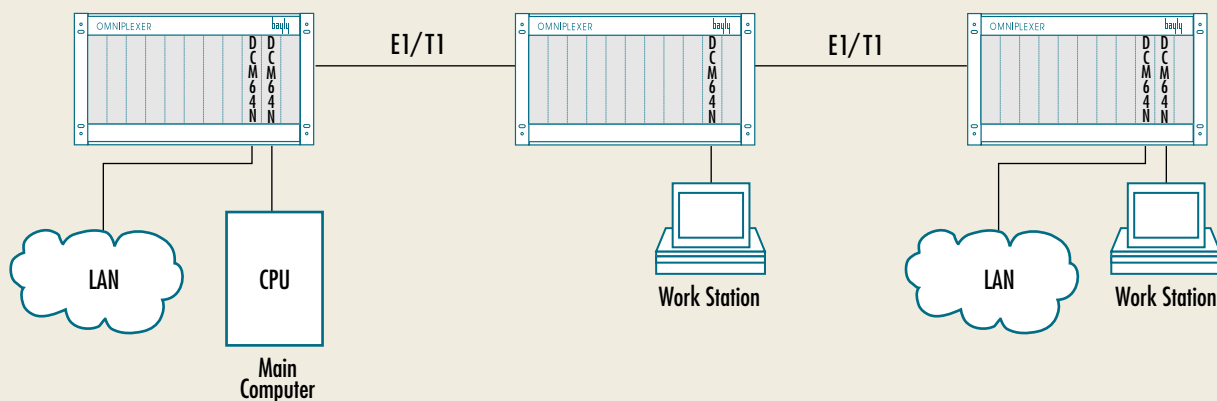
- Mainframe-to-mainframe computer communications
- High speed data file transfer
- LAN/WAN connectivity
- Digitized video transmission

BENEFITS

- Protects your investment - expand bandwidth to match your need
- Simplified installation - plugs into any Omniplexer card slot
- Software programming - no switches to set, no adjustments to make
- Supports all your high speed data needs

Software configuration control

DCM64N High Speed Synchronous Data Applications



DCM64N High Speed Synchronous Data Module Specifications

Data Rate:	56/64 Kbps - 1920 Kbps (E1 systems) 56/64 Kbps - 1536 Kbps (T1 systems)	Handshakes:	V.35: RTS, CTS, DSR, DTR RS422: RTS, CTS, DSR, DTR
Bandwidth Usage:	1 to 30 time slots (E1 systems) 1 to 24 time slots (T1 systems)	Loopbacks:	Local or Remote, activated from VT100 terminal
Clocking:	Synchronous Internal Slaved from E1 network Synchronous External Transmit clock loop-timed from receive clock by DTE	Module Set-up:	VT100 compatible terminal via front panel RJ11 jack
Electrical Interfaces:	V.35 per CCITT Recommendation RS422 per EIA Specifications	Environmental:	Operating Temperature: 0° to +50° C Storage Temperature: -25° to +70° C Humidity: to 95 % non condensing
Physical Interface:	V.35 - Block Connector RS449 - DB-37 Connector RS530 - DB-25 Connector		

Module Types and Ordering Information

DCM64N modules for E1 Omniplexer systems include:

- 2-channel N x 56/64 Kbps with V.35 interfaces.
Part number: 050 618
- 2-channel N x 56/64 Kbps with RS422 interfaces.
Part number: 050 619
- 4-channel N x 56/64 Kbps with V.35 interfaces.
Part number: 050 618 004
- 4-channel N x 56/64 Kbps with RS422 interfaces.
Part number: 050 619 004

DCM64N modules for T1 Omniplexer systems include:

- 2-channel N x 56/64 Kbps with V.35 interfaces.
Part number: 050 489
- 2-channel N x 56/64 Kbps with RS422 interfaces.
Part number: 050 490

Data interface cables for both E1 and T1 DCM64N modules:

- | | |
|---|---|
| ▪ V.35, 2 circuits
Part number: 050 256 | ▪ V.35, 4 circuits
Part number: 050 362 |
| ▪ RS449, 2 circuits
Part number: 050 257 | ▪ RS449, 4 circuits
Part number: 050 361 |
| ▪ RS530, 2 circuits
Part number: 050 260 | ▪ RS530, 4 circuits
Part number: 050 359 |

For complete specifications, please contact Bayly Communications

**NETWORK ACCESS
AND TRANSMISSION
PRODUCTS**

BAYLY COMMUNICATIONS INC
105 Green Crt., Ajax, Ontario, Canada L1S 6W9
Tel: (905) 686-1011 Fax: (905) 686-2935
e-mail: sales@bayly.com
Internet: www.bayly.com

